



EST. 1996

THE SIS JOURNEY

**FROM AN  
INSPIRATION  
TO A LASTING  
GLOBAL IMPACT**

## **We live in a world of limitless opportunity and unpredictable change,**

a future where only adaptable, prepared minds will truly thrive. At SIS Group of Schools, education is more than teaching; it is the art of inspiring curiosity, resilience, and a lifelong love for learning. Everything we do is shaped by our 3Ps Framework—ensuring the right People, the right Program, and the right Place for every child to thrive.

### **People**

Our strength begins with our teachers. Through genuine, meaningful connections with students, they help nurture positive mindsets and drive stronger learning outcomes. Backed by a collaborative, diverse leadership team and data-driven decision-making, we ensure that

people—our students, teachers, and community—remain at the heart of everything we do.

### **Program**

We blend our home country's potential with Singapore's world-class standards, offering the Singapore, Cambridge, and IB curricula in a warm, supportive, family-like environment. Our programs prepare students for the real world: strong foundations in English, Math, and Science; enriched learning in the Humanities, Arts, and regional languages; seamless integration of technology and AI for future-ready skills; and a strong emphasis on sports, wellbeing, and essential life skills. Through personalised pathways and

innovative teaching, we equip students not just for exams, but for life.

### **Place**

Our campuses are designed to be safe, inspiring environments that encourage discovery, creativity, and growth.

Through thoughtful design and continuous improvement, each school becomes a place where students feel motivated, supported, and ready to explore their full potential.

At SIS, we don't simply guide children toward success—we walk beside them as they discover their strengths, explore their passions, and grow into confident, capable global citizens.

*Let's continue our journey...*

*Published in 2025*

# SIS Group of Schools Footprint in Asia



SIS North East Jakarta



SIS South Jakarta



SIS Pantai Indah Kapuk



SIS Preschool  
Sedayu City



SIS West Jakarta



SIS Bandung



SIS Cilegon



SIS Semarang



SIS Surabaya



SIS Medan



SIS Palembang



SIS Gwangju Korea



SIS Myanmar



ASIS Chennai



VSIS Mumbai



Coming Soon

SIS BSD City



Coming Soon

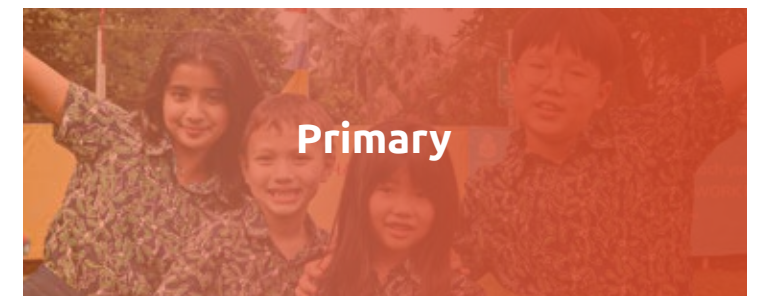
SIS Senayan

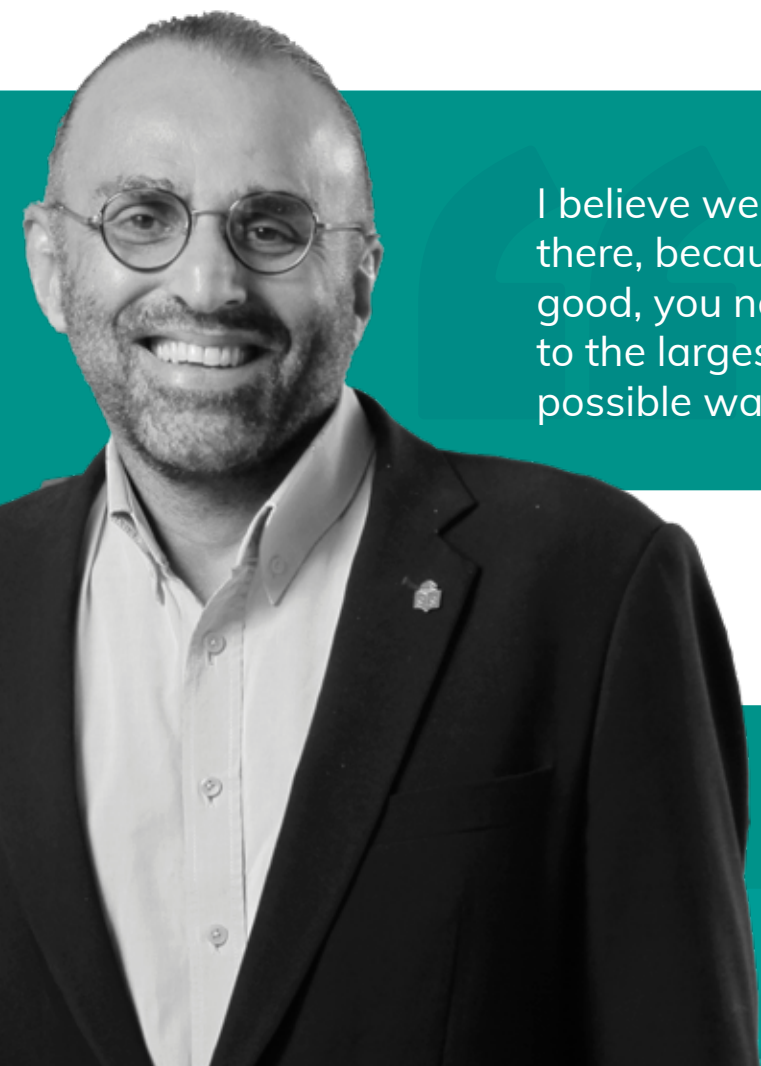


# EDUCATING FOR A SUSTAINABLE, CONNECTED AND FUTURE-READY WORLD.

SIS Group of Schools provides world-class international K–12 education, offering a continuous learning journey from Kindergarten to Grade 12 across Asia. With a growing network of transformative schools spanning multiple cities and countries, SIS has built a well-established reputation for excellence.

SIS offers three globally recognized curricula : Singapore, Cambridge, and the International Baccalaureate (IB), preparing students to thrive in a connected, global world.





I believe we need to equalise the odds out there, because if you are sitting on something good, you need to make that good available to the largest number of people in the best possible way.

**Jaspal Sidhu**  
Founder and Chairman,  
SIS Group of Schools



### SIS IS BORN

- ⦿ Jaspal Sidhu, a Singaporean, embarks on a mission to make quality education affordable and accessible in Indonesia. With support from his alma mater, Raffles Institution—Singapore’s premier school and alumnus of founding father Lee Kuan Yew—the first SIS school opens in Jakarta.



### CONCEPTION OF A VISION

- ⦿ Singaporean business leaders in Indonesia, inspired by Singapore’s educational excellence, envision a Singapore-style school in Jakarta for both expatriates and local communities, following discussions with Singapore’s national leadership.





### A DEFINING YEAR

- SIS relocates to South Jakarta, transforming an unfinished clubhouse into a vibrant, state-of-the-art campus and earning IGCSE (Cambridge) certification.
- SIS expands with new schools in Kelapa Gading (North East Jakarta) and Kebon Jeruk (West Jakarta).



### COMPASSION IN CRISIS AND EXPANDING ACCESS TO QUALITY EDUCATION

- A devastating tsunami strikes Aceh, Indonesia, and several other countries, claiming over 230,000 lives. SIS partners with organisations like Rotary to support relief and recovery efforts.
- SIS expands its presence in Jakarta by establishing a campus in Pantai Indah Kapuk (North Jakarta).
- SIS opens in Cilegon (Banten), a major industrial and port city about 100 km west of Jakarta, becoming the first high quality affordable international school serving that area.

# ›1998 ›2002 ›2003 ›2004

### THE MAY RIOTS, SCHOOLS CLOSE

- Riots erupt across multiple Indonesian cities, leading to the fall of President Suharto after 32 years in power and ushering in the reform era. Many schools close temporarily, but SIS stays in touch with students, supports safety and evacuation efforts, and continues providing education using technology.



### EXPANDING HORIZONS

- With growing requests to bring SIS to other major cities in Indonesia, SIS forms a strategic partnership with the World Bank Group (IFC) and opens its first school outside Jakarta in Medan (North Sumatra).
- SIS introduces Middle and High School levels across all its schools.



Partnership with World Bank Group (IFC)





### LEADERSHIP COLLABORATION

- ◉ SIS establishes the first Leadership Council of Head Teachers (Principals), a platform for all SIS schools and their leadership to collaborate, share best practices, and learn from one another.



### SUPPORTING EDUCATION AMID A GLOBAL FINANCIAL CRISIS

- ◉ The global financial crisis impacts economies worldwide, including Indonesia. SIS Schools respond by launching scholarships to help communities continue their education journey.

# » 2005 » 2006 » 2007 » 2008

### STRENGTHENING PRESENCE IN INDONESIA

- ◉ With rising enrolments, SIS moves its Kelapa Gading campus to a new location.
- ◉ SIS opens a campus in Semarang (Central Java).



### FIRST SIS OLYMPICS

- ◉ SIS launches the SIS Olympics to unite all SIS schools, strengthen alumni and community connections, and promote competitive sports in track and field, swimming, and other games.





## IB Learner Profile

Thinkers  
Inquirers  
Open-Minded



### RAISING THE BAR WITH THREE WORLD-CLASS CURRICULA

- SIS introduces the International Baccalaureate (IB) Programme, becoming the only school group in SE Asia to offer three leading curricula: Singapore, Cambridge, and IB. All integrated with the best from the local systems.



### FROM INTERNAL TRANSFORMATION TO NATIONAL IMPACT

- SIS renames its Management Team as the Support Team to better reflect its role in providing strategic guidance and operational support to all schools. Today the SIS Support Office team ensures efficiency, collaboration, and consistent delivery of high-quality education, while safeguarding the well-being of all stakeholders. It also strengthens transparency with partners, building trust and confidence to continue supporting SIS's growth.
- SIS launches a series of Public-Private Partnership programmes to deepen its impact in the communities it serves.



### MAKING EDUCATION MORE AFFORDABLE AND FIRST FORAY OVERSEAS

- Responding to calls for more affordable schools in Sumatra, SIS opens a campus in Palembang, bringing quality and affordable education to South Sumatra.



- Encouraged by the high standards of education at SIS, returning Korean parents called for a campus in South Korea. SIS responded by opening SIS Gwangju, which proudly welcomed its first students.



### REFINING BRAND, MISSION, AND VISION

- SIS refines its brand, mission, and vision to reflect growth, align with evolving educational needs, inspire, connect, and guide the community toward lasting impact.



----->  
The SIS Logo Transformation



## RETHINKING THE FUTURE THROUGH COVID-19 AND EXPANDING INTO ASEAN

- COVID-19 forces many schools to close, but SIS pivots to online learning and achieves double-digit enrolment growth.
- In response to an unpredictable world, SIS adopts PACE—Perseverance, Analytical Thinking, Collaboration & Communication, and Entrepreneurship—as its Desired Student Learning Outcomes.
- SIS strengthens its teaching approach by ensuring all teachers are trained in Active Learning, where students learn through thinking, discussing, investigating, and creating.

SIS Founder and Chairman Jaspal Sidhu partners with Deloitte (Singapore) to study cutting-edge HR and recruitment practices from top global companies, leading to the creation of the EFFECTOR model—eight attributes that help teachers connect deeply with students. This shifted SIS' entire hiring philosophy to focus on attitude and not just skills, transforming recruitment, training, and teacher development.



SIS expands overseas to Myanmar, marking its next step into ASEAN.



## SETTING A SUSTAINABILITY BENCHMARK

SIS's design philosophy and curriculum, rooted in environmental commitment and aligned with the UN Sustainable Development Goals (UNSDGs), earn global recognition when SIS Chennai becomes India's first school to receive the World Bank Group (IFC) Advanced EDGE certification. This milestone reflects SIS's dedication to sustainable campuses and fostering environmental awareness in students.



## GLOBAL AWARDS, NATIONAL VOICE

- SIS earns global recognition in London by the World Bank Group (IFC) and Financial Times (UK) for outstanding standards and transformative impact in education—an honour regarded as the "Oscar of Education" from two of the world's most respected institutions.
- SIS is invited to join an international panel alongside Indonesia's Education Minister to discuss the country's pressing education challenges. Thereafter, SIS becomes part of a think tank advising the Indonesian government on key education matters.



Global Recognition for Transformational Work in Education  
Awarded by Financial Times (UK) and IFC (World Bank) 2019



Best International Educational Institution South East Asia  
Awarded by Capital Finance International London 2021



Top 50 in Asia for Delivering Positive Outcomes for Organization, Communities, People and Planet  
Awarded by INSEAD Hoffman Institute Steward Leadership Top 25 Award 2022

## EXPANDING INTO INDIA AND EARNING GLOBAL RECOGNITION

- SIS is honoured by Capital Finance International (London) as the Best International Education Institution in Southeast Asia, recognised for its transformative impact and its unwavering focus on the well-being of its communities.
- Singapore's reputed Business Times—widely read by business leaders—features a major story on SIS titled "Providing the Best Education at Non-Prohibitive Costs."
- SIS expands into Chennai and Mumbai, India.





## FROM EARLY LEARNING TO GLOBAL LEADERSHIP, BACKED BY WORLD'S #1 EDUCATION SYSTEM

- Recognising the growing need for stand-alone preschools, SIS launches its first dedicated early childhood centre in Sedayu (North East Jakarta).
- SIS expands to Bandung (West Java).
- SIS earns the distinction of being the only school in the world invited to Cambridge's Global Leadership Conference in Bangkok to share its success story.
- The Organisation for Economic Co-operation and Development's (OECD) Programme for International Student Assessment (PISA) ranks Singapore number one globally again in Mathematics, Science, Reading, and Creative Thinking—reaffirming SIS' choice to adopt Singapore's world-leading education systems and standards.

### ALUMNI VOICES



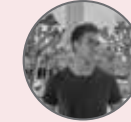
"I'm really grateful to have a community from my family, friends and also SIS that supports me to pursue my goals to become an engineer."

Jovita Kartika Tedja  
University of Pennsylvania, USA  
Mechanical Engineering & Applied Mechanics



"SIS has helped to mentally prepare me for the workload and challenges that I currently face in Singapore Management University."

Alicia Jeane Santoso  
Singapore Management University  
Psychology and Marketing



"I am grateful for the relationship I had built with both my teachers and classmates. They were extremely accommodating and friendly"

Christoffer Aryanto  
UC Berkeley, USA - Environmental Engineering



"I felt like I was part of a family. The teachers always had our best interest in mind, and with the friends"

Jason Wong  
University College London, England  
Mechanical Engineering

# » 2023

# » 2024

# » 2025

## SHAPING THE SCHOOLS OF TOMORROW, EXPANDING INTO EAST JAVA

- Driven by a bold vision for the future, SIS develops a five-point design philosophy that guides the development of every campus. Each SIS school will now be a community school, a future-ready school, a resilient school, a green school, and a model of excellence for others to emulate.
- Responding to strong demand for SIS in Surabaya (East Java), the expanding SIS Group acquires and rebrands an existing school in the city, bringing SIS's quality education and values to the communities living and working there.



- Cambridge reviews SIS's education standards and operations in delivering quality education that is both affordable and accessible. It selects SIS Palembang as a global case study, producing a glowing report.
- SIS is chosen by Indonesian President Prabowo Subianto's Education Foundation (Yayasan Pendidikan Kader Bangsa), which is spearheading the establishment of IB schools across Indonesia, to identify and train their teachers.
- SIS is invited by the Rwandan Government to share its success story and support the training of public school teachers.
- SIS is invited by Samsung to showcase how it leverages technology to empower teachers and achieve strong results—making quality education both affordable and accessible.

## A DEFINING YEAR OF GLOBAL RECOGNITION, FUTURE-READY BENCHMARKS, AND UNMATCHED GROWTH

- SIS establishes a collaborative exchange programme with Singapore's premier Raffles Institution, giving students from both schools the chance to connect, share experiences, & learn together as future global leaders.
- SIS Kelapa Gading (North East Jakarta) finds its permanent home in a green, serene setting, offering a vibrant learning environment by the lake. This nature-integrated, technology-driven "Lakeview Campus" is designed to prepare students for the future and sets the benchmark for all SIS schools.
- SIS is invited to establish a high-quality school in BSD City (South Tangerang), a modern and dynamic community in South Tangerang, Banten Province, on the western outskirts of Jakarta.
- SIS opens another dedicated preschool in Senayan (Central Jakarta) paving the way for more early childhood centres ahead.
- Every SIS graduate is accepted by at least one of the world's Top 50 universities, setting a new benchmark of excellence and reaffirming SIS's reputation for preparing students to thrive at the highest global standards.
- SIS becomes the only school group to be invited on stage and share its success story in the 2025 ASEAN Summit in Kuala Lumpur. Founder and Chairman Jaspal Sidhu spoke on an Education Panel in front of global and regional leaders.
- SIS Group of Schools achieves historical high in enrolment numbers.
- With the proven success of SIS students in today's unpredictable world—and the strength of the trusted SIS brand, high governance, and recognised standards—more calls are coming to establish SIS schools across Indonesia and overseas.



# **The Journey Continues...**

From inspiration to impact, our story grows with every learner we empower.